

Thank you for choosing mr blinds roller blinds to be a part of your home.

Before you begin installing your roller blinds:

- Read these instructions fully
- Make sure that you have all tools and hardware needed for installation
- Remove all packaging from your blind(s)
- Ensure you have matched each blind with the correct window
- Leave the blind rolled-up completely for ease of installation

Tools & equipment you may need are:

- Phillips head screwdriver
- Screws (provided)
- Tape measure
- Pencil
- Ladder (if required)

roller blind brackets

Each blind has two brackets - the 'male' bracket is used for the chain control end of the blind, and the 'female' bracket is used to mount the end with the pin (figure 1).



figure 1: roller blind brackets

inside fit blind - fitting the brackets

- Ensure that the blinds will clear any window handles when down and that they will not rub against the back of the window frame or any mullions.
- Back roll blinds - mark the bracket locations, typically about 10-20mm in from the front edge of the window reveal (figure 2).
- Front roll blinds - mark the bracket locations at least 15mm in from outer edge of window frame. You may want to set the brackets further into the window frame to reduce the amount of light coming past the outside edge of the blinds.
- Place the control bracket on the side of the window where the chain will hang and screw the bracket (screws supplied) to the underside of the window reveal.
- Now hold the pin end bracket on the other side of the window and screw the bracket to the underside of the window reveal.



figure 2: standard inside fit bracket fixing

If you do not have enough clearance for window handles or your window frame is very narrow then fix the brackets as follows:

- Rotate the brackets 90 degrees and fix them to the side of the window reveal (figure 3).
- Fix each bracket 20mm below the top of the window frame and set them out far enough from the window reveal so that the blind is clear of any obstructions when it is down.



figure 3: alternative bracket fixing

outside fit blind - fitting the brackets

- Mark the position of each bracket on the wall or architrave, above the window, so that they are set to the 'width' measurement on the blind label - ensure that the distance from each bracket to the window reveal is the same on each side and that the brackets are level (figure 4).
- Check that there is a solid fixing behind each bracket - typically there will be a solid wood lintel above the window to fix into.
- If fitting the brackets to an architrave we suggest that you drill small pilot holes so that the screws do not split the architrave.
- Screw the brackets in place (screws provided). If you are screwing into gib, you will need longer screws.



figure 4: outside fit bracket fixing

fitting your blind

- Rotate the clear plastic 'cog' at the pin end of the blind until the pin moves in completely and locks on place (figure 5)

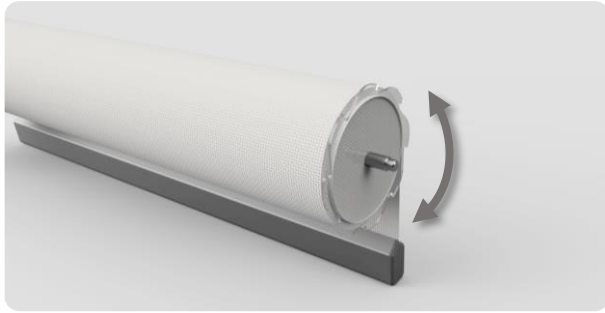


figure 5: rotate the plastic 'cog' to move the pin inwards

- Ensure that you don't rotate the control end outer housing (figure 6). To help you may want to keep the rubber band in place on the chain.

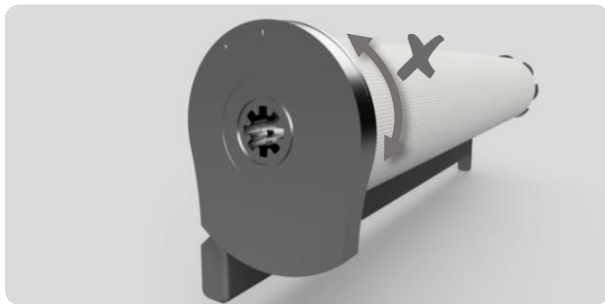


figure 6: control unit orientation

- Slide the control end of the blind onto the control bracket (figure 7).
- Now move to the pin end while holding the control end of the blind in place and push the pin end up into the pin end bracket (figure 8), then turn the clear 'cog' again to release the pin so that it clicks into the pin end bracket. Be careful that the pin does not hit the window reveal.

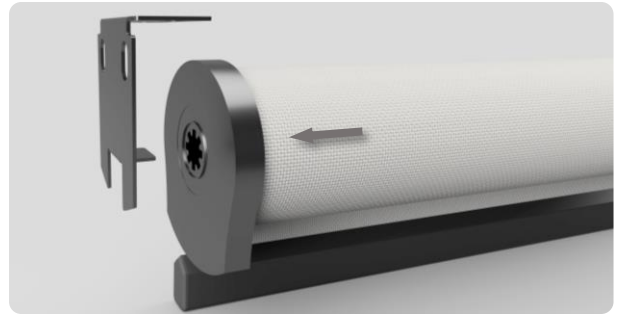


figure 7: fitting the control unit into the bracket

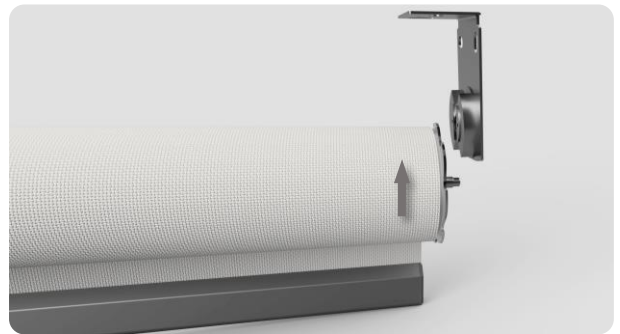


figure 8: fitting the blind into the pin end bracket

checking the blind operation

- Check that the pin only shows a maximum of 2-3mm from the pin end bracket - if it protrudes more than this you will need to move one of the brackets inwards slightly away from the frame.
- Check that the blind rolls all the way up and all the way down.
- When the blind is all the way down check that the plastic ball stopper on the chain is about 100-150mm away from the control unit. If not remove the ball stopper and move it to the correct position.

removing your blind

- To remove the blind rotate the clear plastic 'cog' at the pin end of the blind while holding the blind (figure 5) - this retracts the pin allowing the pin end of the blind to slide out. Next pull the control end of the blind from the control bracket.

how to operate and care for your blinds

how to operate your blind

- Raise or lower the blind by pulling downwards on the chain.
- Do not allow the chain to rub against the fabric when you raise or lower the blind (such as pulling the chain at an angle across the face of the blind) as the fabric will fray over time. This is not covered by the warranty.
- Do not lower the blind so far that the clear ball stopper hits the control unit, as this may break the control unit over time.

- When opening a window behind your blind, always pull the blind up first - do not push your hands around the blind as this may damage the fabric.

how to care for your blind

- Surface dust should be removed with a duster or soft cloth (we recommend using a micro-cloth).
- The fabric also may be wiped with a damp cloth. Use only water or a mild detergent.
- On windy days, close windows or raise your blinds to prevent damage to the blind.